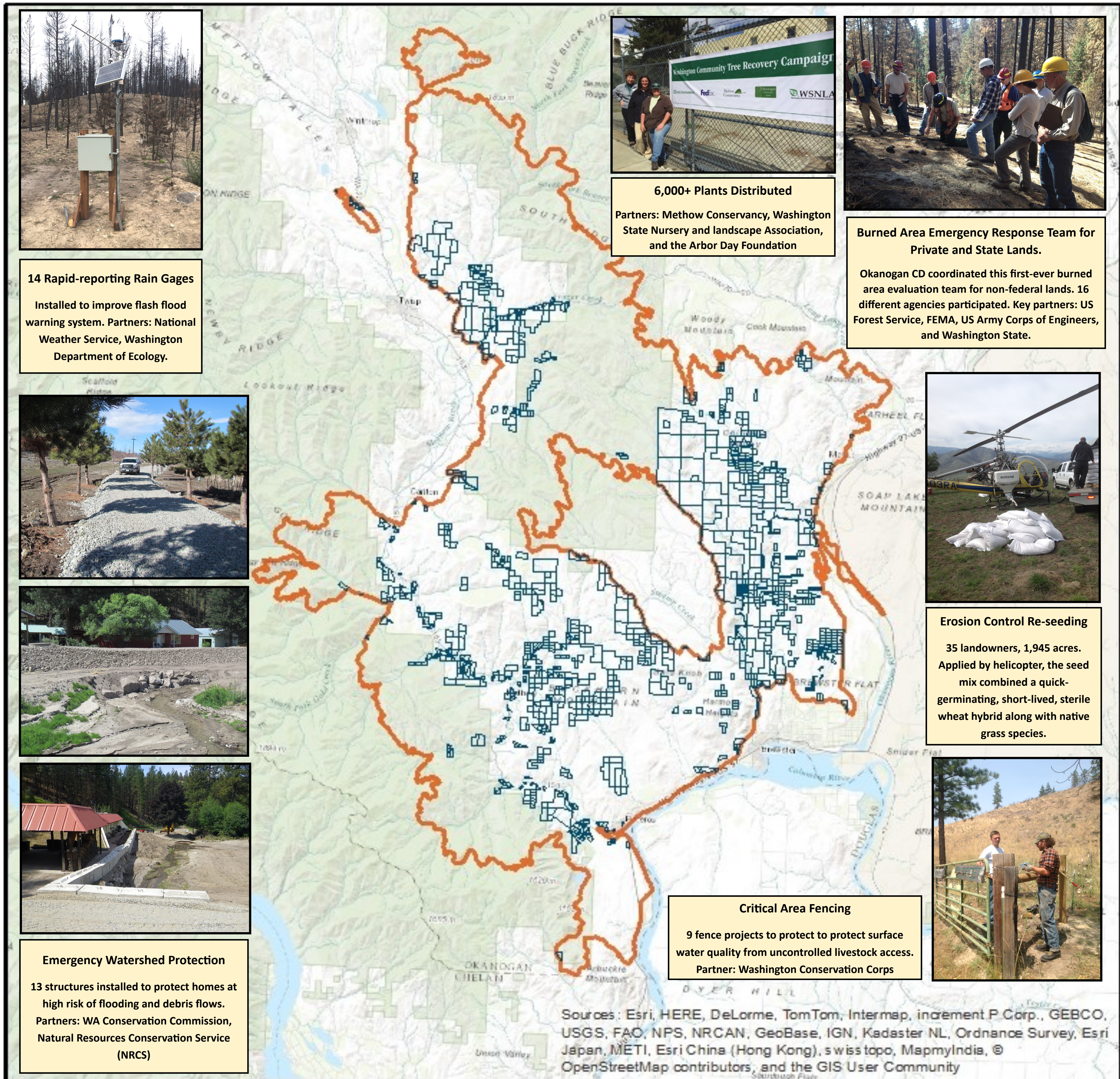


# Carlton Complex Response and Recovery Work



- Okanogan CD provided 300 landowners (cooperators) with technical and/or financial assistance regarding their natural resources and/or agricultural infrastructure.
- Okanogan CD coordinated recovery open houses and workshops serving 100+ participants.
- Funding sources: Washington State Conservation Commission, Washington State Department of Ecology, FEMA, Natural Resources Conservation Service, Washington State Farm Bureau, Okanogan Conservation District Local Assessment, Arbor Day Foundation, Washington State Nursery and Landscape Association.



**14 Rapid-reporting Rain Gages**  
Installed to improve flash flood warning system. Partners: National Weather Service, Washington Department of Ecology.



**6,000+ Plants Distributed**  
Partners: Methow Conservancy, Washington State Nursery and Landscape Association, and the Arbor Day Foundation



**Burned Area Emergency Response Team for Private and State Lands.**  
Okanogan CD coordinated this first-ever burned area evaluation team for non-federal lands. 16 different agencies participated. Key partners: US Forest Service, FEMA, US Army Corps of Engineers, and Washington State.



**Emergency Watershed Protection**  
13 structures installed to protect homes at high risk of flooding and debris flows. Partners: WA Conservation Commission, Natural Resources Conservation Service (NRCS)

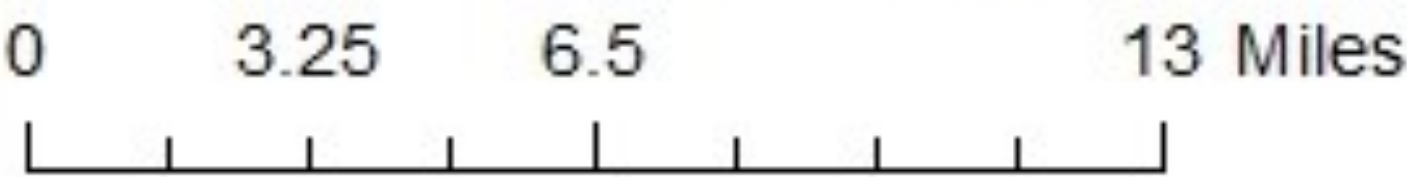


**Erosion Control Re-seeding**  
35 landowners, 1,945 acres. Applied by helicopter, the seed mix combined a quick-germinating, short-lived, sterile wheat hybrid along with native grass species.



**Critical Area Fencing**  
9 fence projects to protect to protect surface water quality from uncontrolled livestock access. Partner: Washington Conservation Corps

Sources: Esri, HERE, DeLorme, TomTom, Intermap, increment P Corp., GEBCO, USGS, FAO, NPS, NRCAN, GeoBase, IGN, Kadaster NL, Ordnance Survey, Esri Japan, METI, Esri China (Hong Kong), swis topo, MapmyIndia, © OpenStreetMap contributors, and the GIS User Community



## The Carlton Complex Fire OCD Cooperators (44,363 Acres)



119°54'45.763"W 48°14'52.782"N  
NAD 1983 UTM Zone 11N

Data are representational only.

SOURCES: Okanogan County GIS, Okanogan Conservation District

Date: 7/13/2015  
Cartographer: Mindy Widell